

ADVANCE ADAPTERS INC.

P.O. Box 247, 4320 Aerotech Center Way

Paso Robles, CA 93447

Telephone: (800) 350-2223

Fax: (805) 238-4201

P/N: 716117

PAGE 1 OF 2

Page Rev. Date: 06-15-16

DUAL SWINGING PEDAL ASSEMBLY USING DUAL MASTER CYLINDER

KIT CONSISTS OF:

No.	Qty	Part No.	Description
1.	2	715651	CLIPS
2.	1	716187	BRACKET
3.	1	716190	RIGHT PEDAL
4.	1	716191	LEFT PEDAL
5.	1	716192	SHAFT
6.	2	716116R	3/8"-24 x 7" ALL THREAD
7.	2	716196	BUTTON
8.	2	716198	NYLINER
9.	2	716651	PEDAL PADS
10.	2	720005	COTTER PINS
11.	7	723701	3/8"-16 NUT
12.	7	723704	3/8" LOCK WASHER
13.	4	723722	3/8"-16 x 1.25 H.H.C.S.
14.	3	723723	3/8"-16 x 1.5 H.H.C.S.
15.	14	723735	3/8" FLAT WASHER
16.	6"	303100	HEAT SHRINK

Optional Items:

P/N 716118 -	Dual Master Cylinder
P/N 716116 -	Slave Cylinder Kit
P/N 716287 -	Slave Cylinder Bracket (GM block only)

INSTALLATION INSTRUCTIONS:

The dual swinging pedals have been designed for use in Jeep vehicles. They can be easily used on several other types of conversions. The pedals have been designed so as to allow for the steering column to pass between the two pedals. To install the pedals, you must first decide on the exact location to be used. Once the position is decided upon, you can then mark the position for bolting. Drill your marked holes, and be sure to allow clearance holes for the master cylinder. Bolt the master cylinder to the dual pedals with the firewall sandwiched between the two. After you've obtained the proper adjustments, be sure to Center punch the threads or use the heat shrink on both sides of the (P/N 716196) to make sure the rod stays at the correct adjustment. The dual pedal kit must be used with P/N 716118 dual master cylinder. This is a Chevrolet item that has had the clutch and brake valves interchanged. You will notice that the markings on the master cylinder will read just the opposite of their actual usage. The slave cylinder for the clutch can be of many different styles or makes and will probably need some special type of mounting bracket made.

NOTE: This kit will not work with disc brake applications.

SPECIAL NOTE: The components packaged in this kit have been assembled and machined for specific type of conversions. Modifications to any of the components will void any possible warranty or return privileges. If you do not fully understand modifications or changes that will be required to complete your conversion, we strongly recommend that you contact our sales department for more information. This instruction sheet is only to be used for the assembly of Advance Adapter components. We recommend that a service manual pertaining to your vehicle be obtained for specific torque values, wiring diagrams and other related equipment. These manuals are normally available at automotive dealerships and parts stores.

ADVANCE ADAPTERS INC.

P.O. Box 247, 4320 Aerotech Center Way

Paso Robles, CA 93447

Telephone: (800) 350-2223

Fax: (805) 238-4201

P/N: 716117

PAGE 2 OF 2

Page Rev. Date: 06-15-16

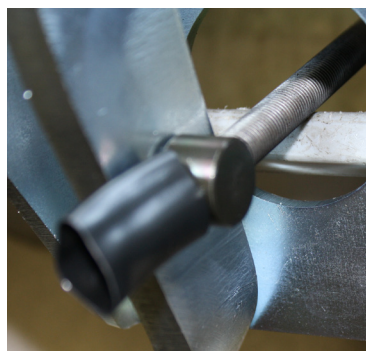
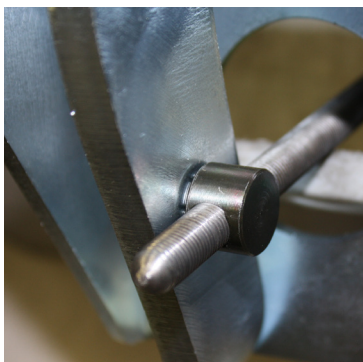
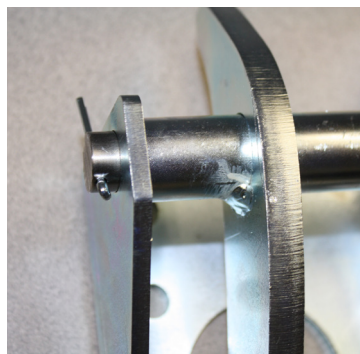
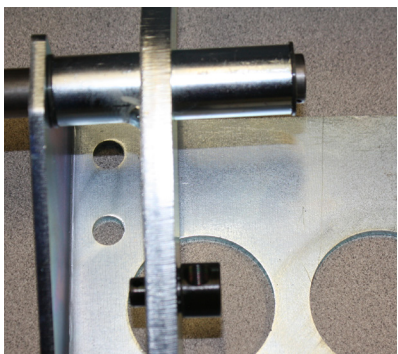
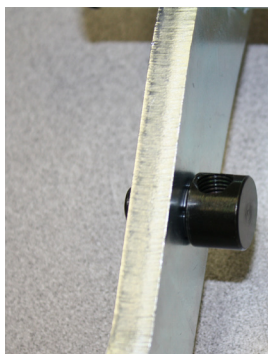
DUAL SWINGING PEDAL ASSEMBLY USING DUAL MASTER CYLINDER

CAUTION:

ADVANCE ADAPTERS CHANGES THE INNER VALVES FROM THE STOCK ASSEMBLY SO THAT THE CORRECT VALVES WILL BE ON THE APPROPRIATE SIDE.

Ref: E15-#E34404 - Rebuild Kit Numbers

Mfg. Raybestos: #MK253 Brake, #MK254 Clutch



Insert the nylon bushing into the pedal the bushing will then need to be tapped into place with a small hammer. Line the pedals up with the bracket and install the pivot shaft and then the cotter pins to retain. Take the all thread rods and install through the hole where the master cylinder will be bolted to and thread it to the pedal buttons. Bolt the master cylinder to the bracket to adjust the all thread also allow for the fire wall thickness on this adjustment. Pull the master cylinder off and install a 1" section on heat shrink tubing on both sides of the button and heat to shrink, this will retain the all thread from moving after installed into the vehicle.

SPECIAL NOTE: The components packaged in this kit have been assembled and machined for specific type of conversions. Modifications to any of the components will void any possible warranty or return privileges. If you do not fully understand modifications or changes that will be required to complete your conversion, we strongly recommend that you contact our sales department for more information. This instruction sheet is only to be used for the assembly of Advance Adapter components. We recommend that a service manual pertaining to your vehicle be obtained for specific torque values, wiring diagrams and other related equipment. These manuals are normally available at automotive dealerships and parts stores.