



4320 Aerotech Center Way

Paso Robles, CA 93447

Telephone: (800) 350-2223 Fax: (805) 238-4201

PAGE 1 OF 2

Page Rev. Date: 10-06-21

P/N: 920001

SATURN OVERDRIVE SHIFT LINKAGE T90 SINGLE T/C HANDLE SHIFTER

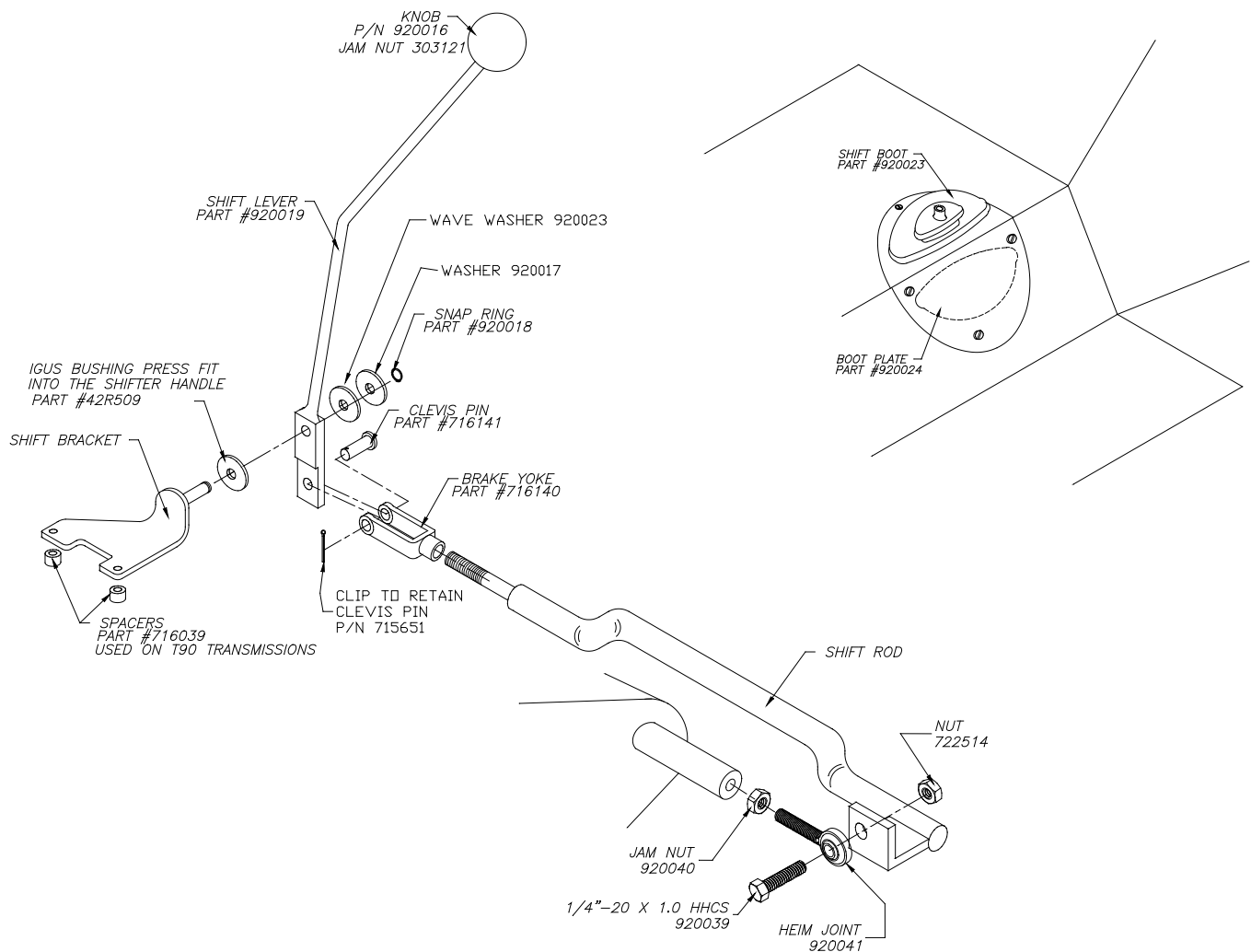
KIT CONSISTS OF:

No.	Qty.	Part No.	Description
1	1	920014	BOLT PACK
2	1	340602	RING- ATLAS SHIFT BOOT SINGLE STICK
3	1	340605	BOOT- SINGLE STICK
4	1*	42R509	1/2 X 3/8 IGUS BUSHING
5	2	723735	WASHER 3/8 SAE FLAT PLT
6	1*	920017	WASHER-SATURN SHIFTER LINKAGE
7	1*	920018	SHIFTER SNAP RING
8	1*	920019	LEVER- SATURN SHIFTER
9	1*	920023	SHIFTER WAVE WASHER
10	1*	920031	BRACKET- SATURN
11	1	920032	SHIFT ROD

The shifter assembly for the Saturn Overdrive is only available for the original T90 3 speed transmission, 1946-1966. The shifter bracket fits directly over the top cover plate of the 3 speed transmission and the pivot extends outward towards the passenger side of the vehicle. To access the assembly of the T90 transmission, the sheet metal tunnel cover will need to be removed. When mounting the shifter bracket, you will need to use the steel spacer washers between the top cover and the shifter bracket. New bolts have been supplied for the bracket assembly to the transmission. The linkage rod must be installed into the shift rail on the back side of the overdrive. With the extension rod in position and the shifter bracket in position, you can now install the handle assembly. The handle will slip over the shifter bracket pin as illustrated. The clevis assembly (or brake yoke), will then slip onto the shifter handle. At this point, the adjustment between the shifter handle and the linkage rod can be determined. The handle should be positioned in a vertical position and the shifter rod in the overdrive should be positioned into the neutral location.

SPECIAL NOTE: The components packaged in this kit have been assembled and machined for specific type of conversions. Modifications to any of the components will void any possible warranty or return privileges. If you do not fully understand modifications or changes that will be required to complete your conversion, we strongly recommend that you contact our sales department for more information. This instruction sheet is only to be used for the assembly of Advance Adapter components. We recommend that a service manual pertaining to your vehicle be obtained for specific torque values, wiring diagrams and other related equipment. These manuals are normally available at automotive dealerships and parts stores.

SATURN OVERDRIVE SHIFT LINKAGE T90 SINGLE T/C HANDLE SHIFTER



SPECIAL NOTE: The components packaged in this kit have been assembled and machined for specific type of conversions. Modifications to any of the components will void any possible warranty or return privileges. If you do not fully understand modifications or changes that will be required to complete your conversion, we strongly recommend that you contact our sales department for more information. This instruction sheet is only to be used for the assembly of Advance Adapter components. We recommend that a service manual pertaining to your vehicle be obtained for specific torque values, wiring diagrams and other related equipment. These manuals are normally available at automotive dealerships and parts stores.