

JEEP JK ATLAS CABLE SHIFTER

KIT CONSISTS OF:

No.	Qty	Part No.	Description
1	1	302061	ATLAS LOGO 2 STICKERS NEW KNOBS
2	1	302062	SHIFTER STICKER- STD ATLAS SHIFTER L-N-H
3	1	302400	ATLAS JK/JL CASE CABLE MOUNT BRKT
4	1	302401	ATLAS JK/JL CASE CABLE LOCKING TAB
5	2	302422AB	LEVER BASE- ATLAS CABLE SHIFTER
6	2	302422AL	LEVER- JK CABLE SHIFTER (NO BASE)
7	2	302423	BARREL NUT- CABLE END 1/4-28
8	2	302424	KNOB- INJ MOLD (SLIP ON) JK/JL
9	1	302425	SHIFT LEVER SPACER
10	4	302426	ROLL PIN-SLOTTED .125 X .750 420 SS
11	1	302427	BOLT- SHOULDER 1/2 x 1 3/4 (3/8-16)
12	2	302450	FLANGE BOLT- 5/16 -18 x 1/2 SERRATED
13	3	302451	FLANGE BOLT- 3/8-16 x .875
14	2	302452	TORX FLAT HEAD SCREW- JL SHIFT KNOB
15	2	302454	CLEVIS PIN- 1/4 x 1"
16	2	302455	COTTER PIN- 3/32 x 3/4"
17	2	302465	CABLE- JK SHIFTER (40" long)
18	1	302500	MOUNT-JK SHIFTER BASE
19	1	302501	TAB- CABLE LOCK JK/JL SHIFTER MOUNT
20	2	303318	BLOCK- ATLAS SHIFT RAIL CABLE MOUNT
21	2	303319	NUT- RETAINING CABLE 42RLE ATLAS
22	4	42R508	1/2 X 1/4 IGUS BUSHING
23	2	722543	1/4 X 20 X 1-1/2 S.H.C.S.
24	1	723703	NUT 3/8 -16 NYLOCK G5 PLT
25	1	723735	WASHER 3/8 SAE FLAT PLT
26	1	42R726	HEAT SHIELD- FIREPROOF SLEEVE 48"

(FOR CABLES AROUND EXHAUST & OR TRANSMISSION COMPONENTS)

Cable shifter instructions: The shifter bracket and cables need to be installed to the front of the Atlas before the unit is installed into the vehicle. The stock transfer case, shifter and cable will also need to be removed. The removal of the console is a good starting point.

NOTE ON SHIFTING: The Atlas Transfer case is a synchronized unit. The transfer case shifts best when the shafts are spinning. Note that when the transfer case is shifted when not in motion, the teeth may or may not be aligned. If the teeth are aligned, then the unit will slip into gear easily. If the unit does not slip into gear easily, then no amount of pulling on the handle will cause the unit to shift. The transfer case must be spun slightly and then it will shift.

SPECIAL NOTE: The components packaged in this kit have been assembled and machined for specific type of conversions. Modifications to any of the components will void any possible warranty or return privileges. If you do not fully understand modifications or changes that will be required to complete your conversion, we strongly recommend that you contact our sales department for more information. This instruction sheet is only to be used for the assembly of Advance Adapter components. We recommend that a service manual pertaining to your vehicle be obtained for specific torque values, wiring diagrams and other related equipment. These manuals are normally available at automotive dealerships and parts stores.

JEEP JK ATLAS CABLE SHIFTER

JK Disassembly

Remove the JK console to gain access to the stock cable transfer case linkage. Unbolt the linkage and remove the cable and rubber grommet from the floorboard. Retain the nuts that hold the shifter to the floor for the new Atlas shifter. You will need to remove the plastic cover of the stock T/C shifter to access one of the bolts



Cut the old cable by the grommet to remove the grommet. The new shifter installation will use this grommet as it will be reinstalled to the floorboard with the new Atlas cables installed.

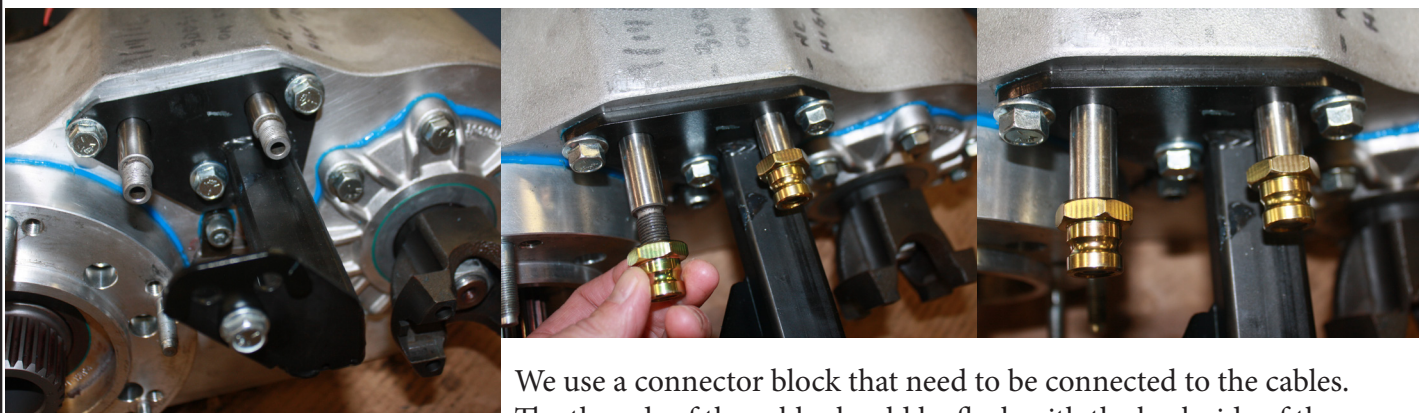


Once the console is removed, the stock transfer case needs to be removed. Support the stock drivetrain up by the transmission as you will need to remove the transmission crossmember and skid pan. After the skid pan is removed, you should be able to remove the driveshafts from the stock transfer case. If retaining the stock driveshafts, these can be left connected to the axles.

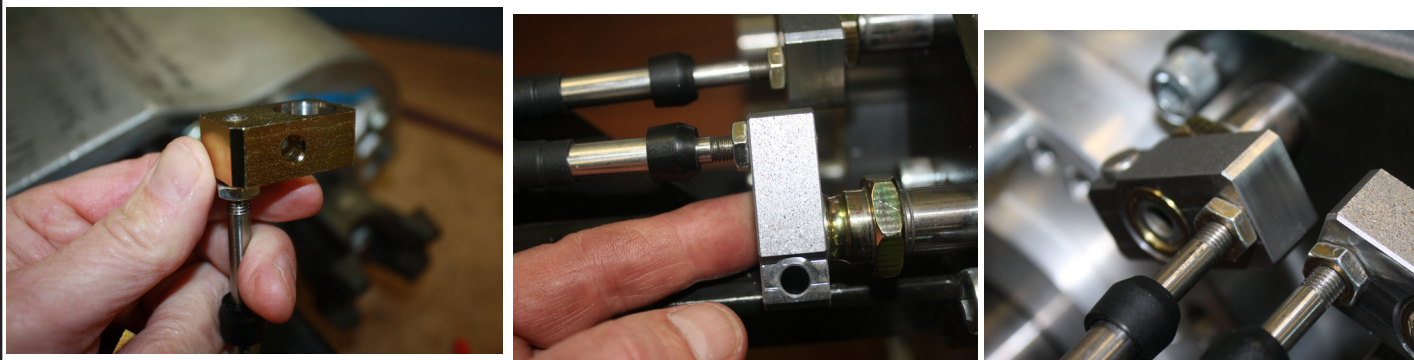
Remove the crossmember and then unbolt and remove the transfer case. Note: If you are able to lower the rear side of the drivetrain a bit, it will provide better access to the transfer case to transmission bolts. The stock transfer case shifter linkage also needs to be removed.

JEEP JK ATLAS CABLE SHIFTER

The cable bracket needs to be installed on the front of the Atlas and silicone on the threads of the bolts. Install the retaining (gold zinc) nuts until they are fully threaded on the shifter rails. **Note: See page 13 if installing an Atlas 4 speed with this shifter kit as the cable shifter bracket for the 4SP must also be installed.**

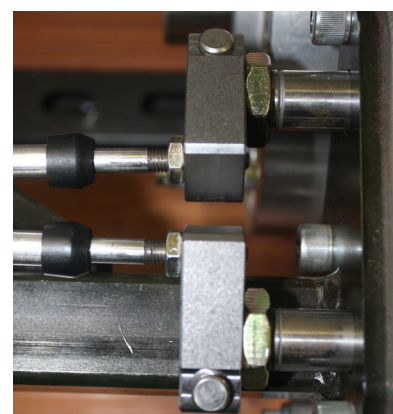
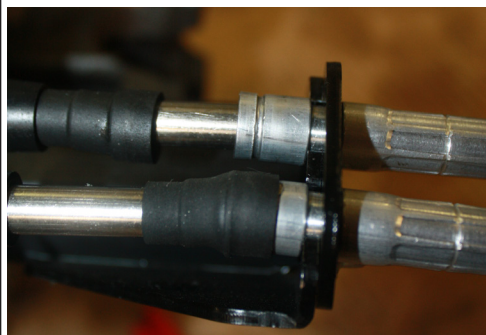
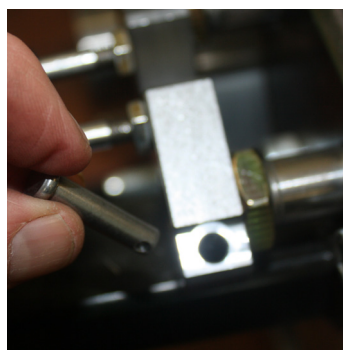
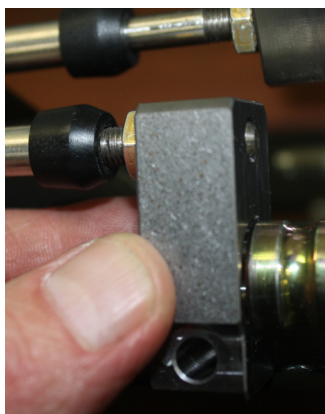


We use a connector block that need to be connected to the cables. The threads of the cable should be flush with the back side of the block or protrude slightly. You can then use the 1/4- 20 jam nut to lock in place. These blocks allow the cables to be installed closer together and provides more clearance on the transmission. Connect the blocks & cables to the shift rails. We like to mark one of the cable with a piece of tape so it can be identified as the cables route into the vehicle and connect to the shifter. Slip the block and cable onto the retaining nut and install the clevis pin and cotter pin to retain.



Note: the link blocks have had a couple different designs. The clevis pin was moved on the block in 2023. All the link block designs work the same.

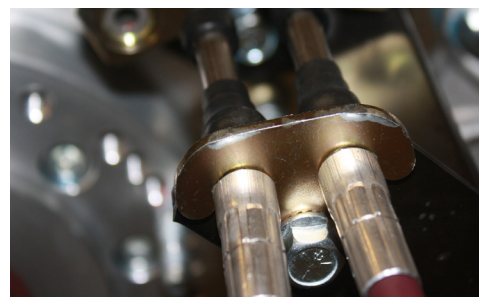
JEEP JK ATLAS CABLE SHIFTER



Once the cable are connected to the Atlas line up the mounting grooves of the cables with the cable mount bracket and install the retaining bracket (302401) and bolt.



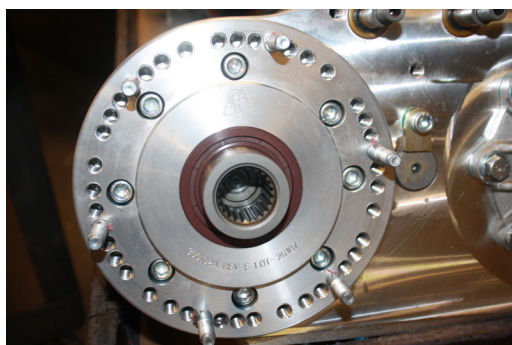
Make sure the lock tab 302401 is used, this parts looks identical to the 302501. We have put a drill mark on 302501 to identify.



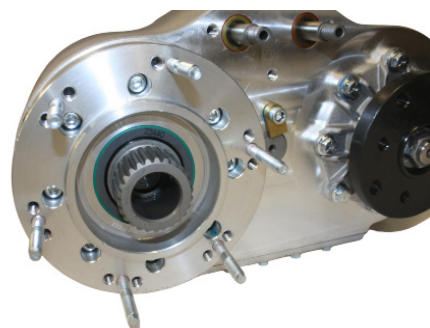
With the cables installed on the Atlas the transfer case, we recommend filling the Atlas with the oil provided. The easier way to fill the unit is pouring oil in thru the speedometer hole. The unit should be tilted slightly forwards to allow the oil to flow into the main case. Once filled install the speedometer or speedometer plug, make sure you use silicon on the bolt threads.

The front studs should also be installed into the input of the Atlas

JEEP JK ATLAS CABLE SHIFTER



Stud bolts installed for a Jeep JK with the stock rotation on a manual transmission (left).

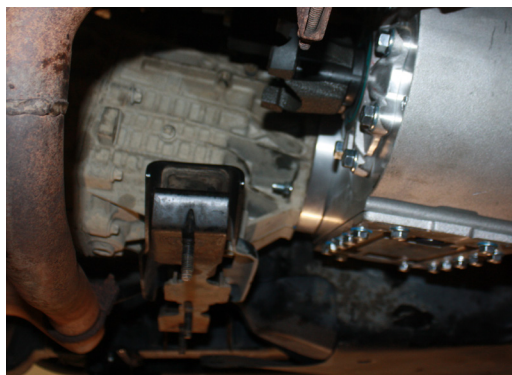


Studs installed on a Jeep JK automatic transmission (right).

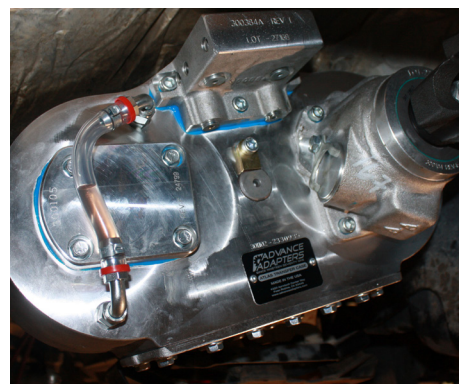


The Atlas is now ready to be installed. We recommend that the Atlas is shifter into gear. This will help line up the input splines of the Atlas with the output splines of the adapter during installation. The photo on page 3 (top right) show the rear output shifter into high range.

Atlas T/C's with the long tailhousing can have the oil added through the speedometer housing hole and then plug it once filled. Atlas T/C's with a short tailhousing should use the site tube to fill.



Install the unit and fasten with the 6 flanged nuts. Route the new cables up by the transmission. You will need to install the floor grommet over the new cables and this will require the hole diameter on the rubber grommet to be increased in size. Slip the cable through the grommet and then one at a time up into the JK console area.



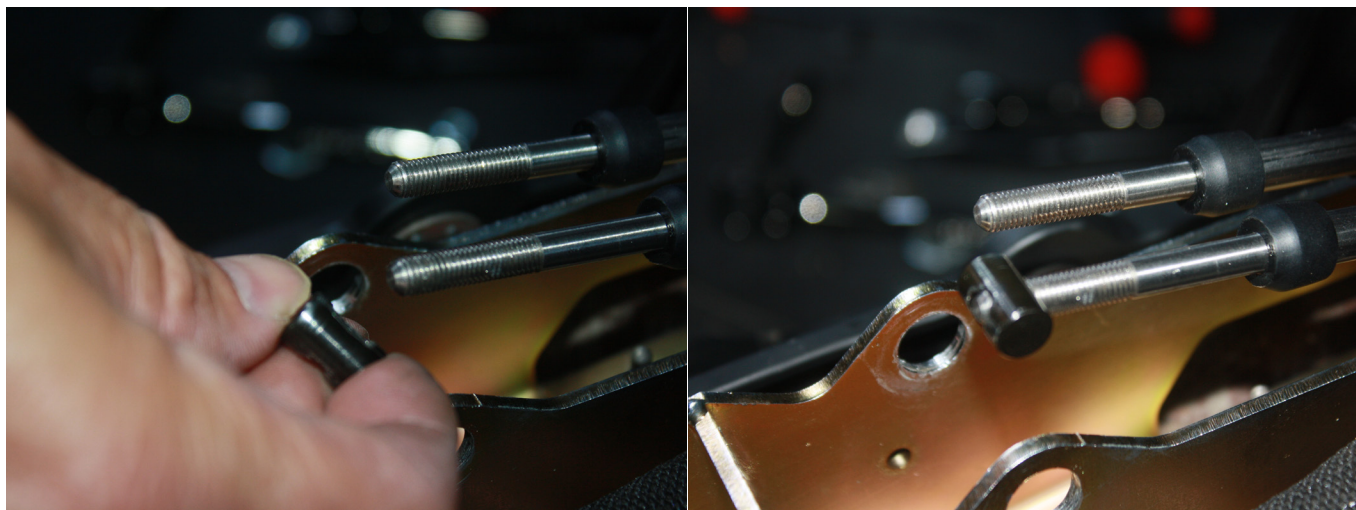
Note: Make sure one of the cable is marked and you know if that one is connected to either the front or rear output. it is very easy to confuse which cable is what once you cant see the front of the transfer case.

Once installed, you can re-install the crossmembers and connect the driveshafts.

JEEP JK ATLAS CABLE SHIFTER



With the two cables coming up into the cab, the rear cable should be mounted to the shifter base closest to the passengers side and the front towards the drivers side using the cable lock tab (302501) and the 5/16 bolt. Once the cables are secured to the bracket, the bracket can be mounted to the floor board using the stock fasteners. Note: the tab that retains the cables looks exactly like the one on the front of the Atlas. We have put a drill mark on this part to identify it.



Install the cable connector ends so that the threads are flush.

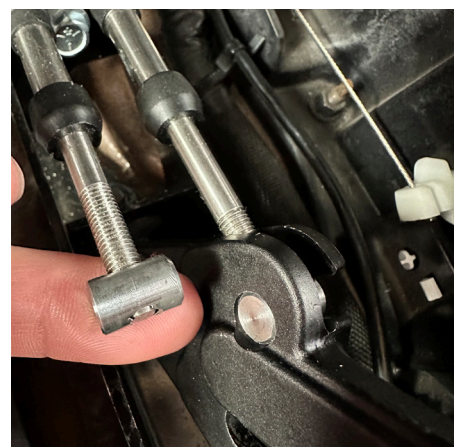
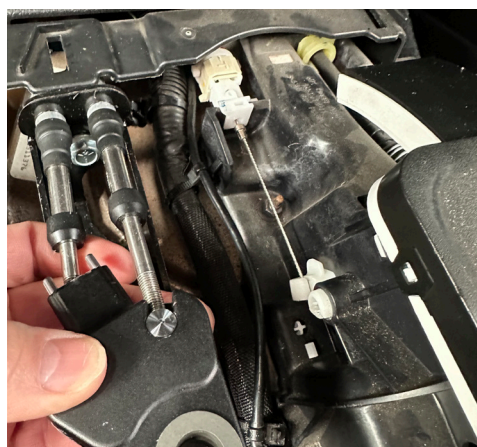
JEEP JK ATLAS CABLE SHIFTER



The shifter handles will need some pre-assembly before they are able to be installed into the shifter housing. The dark grey bushing get pressed into both sides of the lever base (bottom hole). There are 4 dowel pins that need to be installed into the base where the base connects to the handle. These are a light press in the base and a slip fit on the lever. Note: please notice that there is an offset to the lever bases, The photo (right) is the correct orientation to install them into the shifter housing. There is a black spacer that goes between the handle bases on the pivot bolt. If the bases are installed opposite of what is shown, they will hit the JK console.



You should also test fit the pivot bolt (shoulder bolt) though the grey bushing, they are a tight fit as you do the final install.



The handle base can now be coupled to the cable nut. The nut should slide onto the base from the side with the cable lined up with the handle groove. Once connected rotate the handle upright to the correct orientation. Note: the cable nut with the cable threads flush orientate the handle in a good location coming up through the console. If you want the handle angled further back or forward you can rotate the handle clockwise one turn for closer to the dash or counter clockwise for angled further back in the console. This is the most adjustment either way. We recommend the nut stay in the location as shown. Once both handle are connected and the base orientation is verified as the (top right) photo, they can be set into the shifter housing to install the pivot bolt.

JEEP JK ATLAS CABLE SHIFTER



With the handles allied with the hole on the shifter housing, start the pivot bolt through the first handle. This is a tight push as it goes through the handle base bushings. Once the bolt is through the first handle, install the white bushing to space the handles apart and then guild the pivot bolt through the last handle. This may require some tapping on the bolt head to get it completely installed. Once through, install the 3/8 washer and nylon lock nut.



JEEP JK ATLAS CABLE SHIFTER

With the handle base cables connected and the shifter housing installed, you can put the console back in place. You should see the two bases with the dowel pins sticking through the console slightly.



Automatic and Manual transmission installs



Line the shifter handles with the dowel pins and install the 1/4-20 socket head bolts.

Install the shifter knobs using a torque wrench



JEEP JK ATLAS CABLE SHIFTER

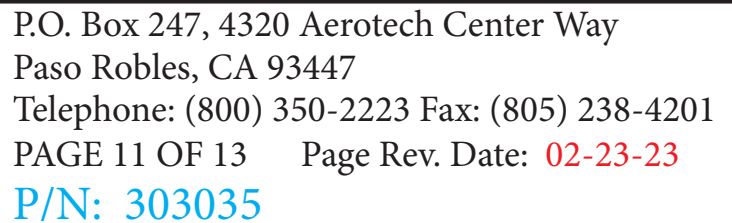


Install the shifter knobs and apply the shift stickers.



The new shifter has the proper clearance on the Jeep manual transmission movement in 1st and 2nd gear.

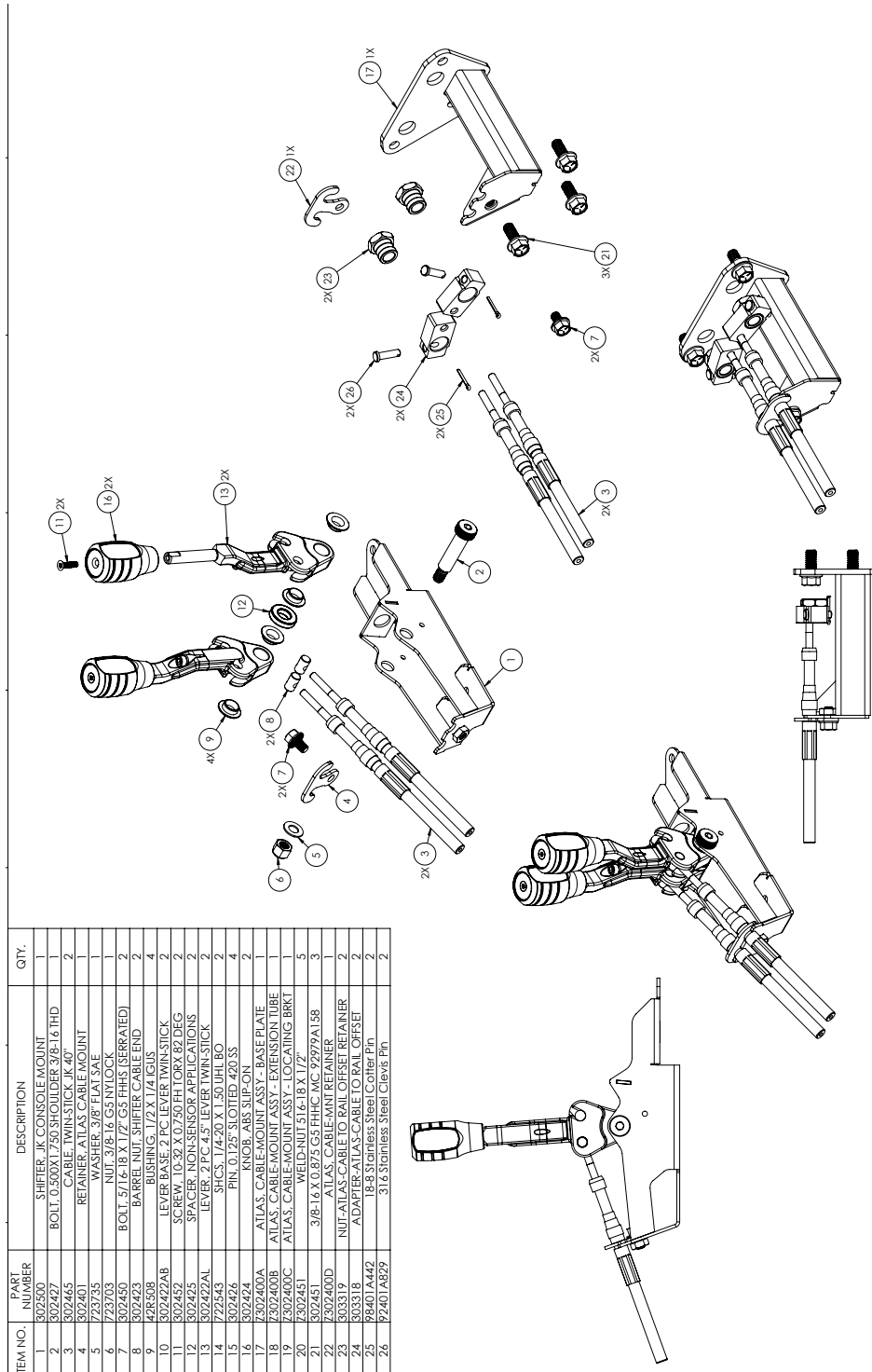
This shifter design does not require any adjustment. If the cable installation was followed at the transfer case as well as the shifter housing, the Atlas should be fully adjusted and ready to go.



A collection of mechanical parts for a vehicle's parking brake system, laid out on a white surface. The parts include two yellow metal brackets, two black plastic actuators, two black metal levers, two black metal shoes, two black metal cables, and various bolts, nuts, washers, and pins. The components are arranged in a way that shows their individual parts and how they might fit together. The yellow metal brackets have a '302506' marking. The black plastic actuators have a 'P' marking. The black metal levers have a 'P' marking. The black metal shoes have a 'P' marking. The black metal cables have a 'P' marking. The various bolts, nuts, washers, and pins are scattered around the main components.

SPECIAL NOTE: The components packaged in this kit have been assembled and machined for specific type of conversions. Modifications to any of the components will void any possible warranty or return privileges. If you do not fully understand modifications or changes that will be required to complete your conversion, we strongly recommend that you contact our sales department for more information. This instruction sheet is only to be used for the assembly of Advance Adapter components. We recommend that a service manual pertaining to your vehicle be obtained for specific torque values, wiring diagrams and other related equipment. These manuals are normally available at automotive dealerships and parts stores.

JEEP JK ATLAS CABLE SHIFTER



JEEP JK ATLAS CABLE SHIFTER

Note: Installing the 4 speed shifter while installing the main case shifter.

First, install the cable bracket for the 4-speed planetary to the case, followed by the main case cable support bracket. Ensure you apply silicon to the threads of the three flanged bolts before installation. The main case bracket is primarily designed to mount directly to the case, aligning with the length of the Atlas shift rails. Therefore, the 3/16 plate for the 4-speed shifter requires adjustment for proper cable alignment. Typically, the mount blocks where the cables thread are adjusted to be flush or slightly protruding through the block. However, with the 4-speed bracket, the threads should be recessed by about 0.125 inches to ensure correct cable adjustment. Failure to do this will result in misalignment of the cable mounting groove and improper shifting of the Atlas. Proceed back to page 3

