

# ADVANCE ADAPTERS INC.

P.O. Box 247, 4320 Aerotech Center Way  
Paso Robles, CA 93447  
Telephone: (800) 350-2223 Fax: (805) 238-4201

P/N: 715572

New Item: (8/02)  
PAGE 1 OF 4  
Page Rev. Date: 03-24-14

## TOYOTA L/C TRANSFER CASE TWIN STICK

### KIT CONSISTS OF:

No:	Qty	Part No.	Description
1.	1 Kit	715570M	MODE SHIFTER HANDLE <i>(Kit Consists of 715586A, 715577, 715588)</i>
2.	1 Kit	715570R	RANGE SHIFTER HANDLE <i>(Kit Consists of 715586A, 715575)</i>
3.	1	715576	T/C HIGH LOW SHIFTER LEVER
4.	1	715579	PIVOT SHAFT
5.	2	715580	3/8"-24 BALL JOINT <i>(High/Low linkage)</i>
6.	1	715581	5/16"-24 BALL JOINT <i>(Mode shift handle)</i>
7.	1	715582	5/16"-24 MALE HEIM JOINT
8.	1	715584AA	SHIFT KNOB SET
9.	1	715585	TRANSFER CASE MODE SHAFT
10.	1	715589	CLEVIS PIN
11.	1	715590	COTTER PIN
12.	4	**715591	(FJ4404) PIVOT BUSHING
13.	1	723101	5/16"-18 NUT <i>(Pivot pin)</i>
14.	1	723103	5/16" LOCK WASHER
15.	1	723122	5/16" FLAT WASHER <i>(Pivot pin)</i>
16.	1	723131	5/16"-24 JAM NUT <i>(Mode link)</i>
17.	2	723719	3/8"-24 JAM NUT <i>(High/Low link)</i>
18.	1	723769	3/8"-24 SET SCREW <i>(High/Low shift lever)</i>
19.	1	723770	3/8"-24 x 7.5" ALL THREAD <i>(High/Low link)</i>
20.	1	302060	TWIN STICK BOOT
21.	1	302063	BOOT RING
22.	2	303121	1/2"-13 JAM NUT <i>(Shift Knobs)</i>

### APPLICATIONS:

- 1) Stock 6 cylinder with stock 4 speed transmission.

\*\*715591 IS A PRESS FIT INTO THE PIVOT BLOCK

### NOTES:

This assembly will require the installation of a new mode shaft into the transfer case. Refer to the exploded assembly view on the following pages for part identification and part assembly.

**SPECIAL NOTE:** The components packaged in this kit have been assembled and machined for specific type of conversions. Modifications to any of the components will void any possible warranty or return privileges. If you do not fully understand modifications or changes that will be required to complete your conversion, we strongly recommend that you contact our sales department for more information. This instruction sheet is only to be used for the assembly of Advance Adapter components. We recommend that a service manual pertaining to your vehicle be obtained for specific torque values, wiring diagrams and other related equipment. These manuals are normally available at automotive dealerships and parts stores.

# ADVANCE ADAPTERS INC.

P.O. Box 247, 4320 Aerotech Center Way  
Paso Robles, CA 93447  
Telephone: (800) 350-2223 Fax: (805) 238-4201

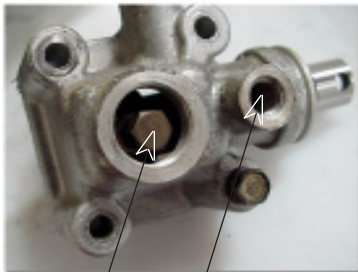
P/N: 715572

New Item: (08/02)  
PAGE 2 OF 4  
Page Rev. Date: 10-04-06

## TOYOTA L/C TRANSFER CASE TWIN STICK

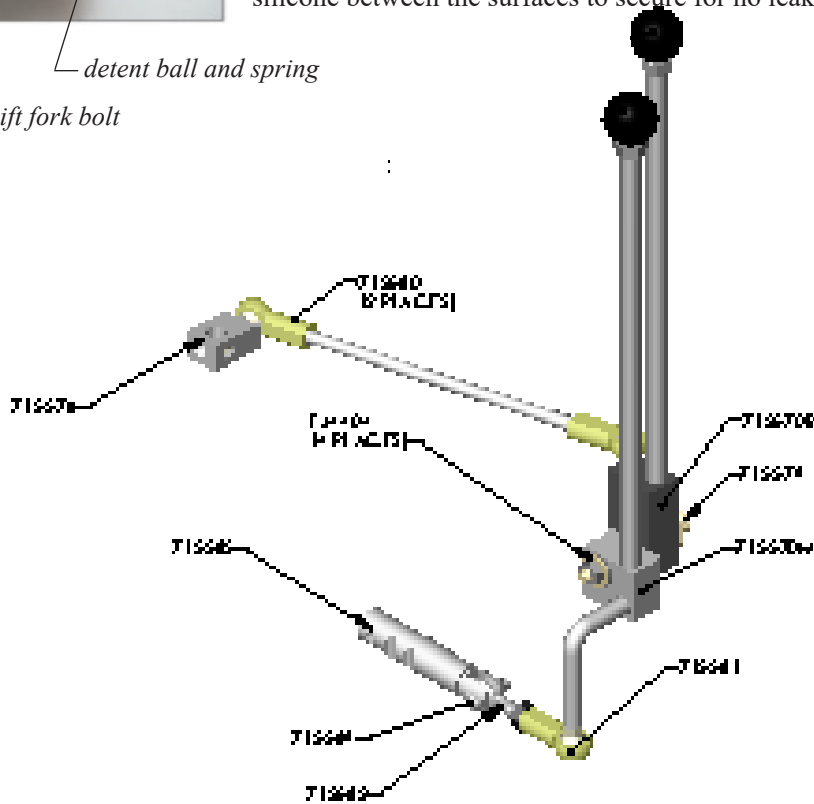
### INSTALLATION OF PART #715585:

This kit requires the installation of a new mode selector shaft into your stock transfer case. This shaft can be installed with the transfer case still in the vehicle. The mode shaft is installed into an aluminum housing that is bolted to the front output shaft housing of the transfer case. This mode shaft housing bolts on using (4) 12mm bolts. By removing these bolts, the mode housing can be removed from the transfer case. Set the mode housing on a bench and remove the plug bolt to expose the bolt that couples the shift fork to the mode shaft. Remove the shift fork bolt through this



— shift fork bolt  
— detent ball and spring

access hole. Remove the shifter detent ball and spring by removing the detent bolt. Remove the rubber boot from the mode housing and pull the mode shaft from the housing. Install the new mode shaft through the seal and into the housing with the detent notches in the correct orientation. Reinstall the shift fork bolt into the shift fork and new mode shaft. Insert the detent ball, spring and cap into the housing. Slide the rubber boot back onto the mode shaft. Install the mode housing back onto the transfer case, making sure to silicone between the surfaces to secure for no leaks.



**SPECIAL NOTE:** The components packaged in this kit have been assembled and machined for specific type of conversions. Modifications to any of the components will void any possible warranty or return privileges. If you do not fully understand modifications or changes that will be required to complete your conversion, we strongly recommend that you contact our sales department for more information. This instruction sheet is only to be used for the assembly of Advance Adapter components. We recommend that a service manual pertaining to your vehicle be obtained for specific torque values, wiring diagrams and other related equipment. These manuals are normally available at automotive dealerships and parts stores.

# ADVANCE ADAPTERS INC.

P.O. Box 247, 4320 Aerotech Center Way

Paso Robles, CA 93447

Telephone: (800) 350-2223

Fax: (805) 238-4201

P/N: 715572

New Item: (8/02)

PAGE 3 OF 4

Page Rev. Date: 09-16-02

## TOYOTA L/C TRANSFER CASE TWIN STICK

### INSTALLATION:

Install the transfer case high/low shifter arm to the top cover of the transfer case. Since Land Cruisers had two shaft configurations, we have provided two tapped holes on this lever. Match the tapped hole with the flat portion of the shaft.



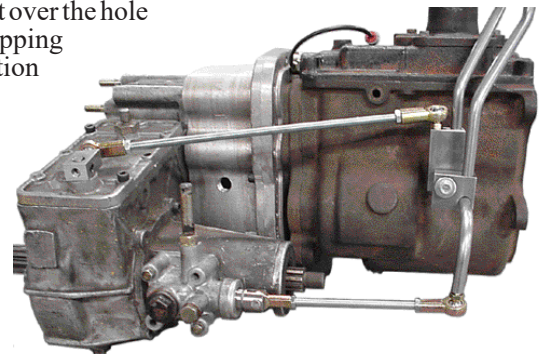
Hold the shift handles in place and mark the floor for necessary modifications. We have designed the handles to come up through the stock hole in the floor with only slight modifications needed to change the shape of the hole from an L-shape to a rectangular shape. Due to variations of drivetrains, the hole may need to be enlarged as well as made into a rectangular shape.

Once there is sufficient clearance for the shifter handles, assemble the pivot shaft (715579), both handles (715570M & 715570R), the 5-16" flat washer, the 5/16" lock washer, and the 5/16"-18 nut together as a unit. Push the handles up through the floor and thread the pivot shaft into the side of the transmission.

Now install the two 3/8" jam nuts and ball joints onto the 3/8" all thread, and bolt this assembly to the high/low shift handle and arm. Adjust the length so that the handle is pointing straight up when the transfer case is in neutral. (Cutting of the all thread may be necessary

for some vehicles to achieve this). Repeat this same process for the mode shifter assembly using the 5/16" all thread, jam nuts, ball joint, and female heim joint. The female heim joint mounts to the mode shaft with the supplied clevis pin and cotter pin.

Once the transfer case shifts in a satisfactory manner, mount the shift boot over the hole in the floor using the metal ring supplied. Use approximately 4 self tapping screws to go through the boot, metal ring, and floor. Finish the installation by adding the 1/2" jam nuts and the shift knobs.



**SPECIAL NOTE:** The components packaged in this kit have been assembled and machined for specific type of conversions. Modifications to any of the components will void any possible warranty or return privileges. If you do not fully understand modifications or changes that will be required to complete your conversion, we strongly recommend that you contact our sales department for more information. This instruction sheet is only to be used for the assembly of Advance Adapter components. We recommend that a service manual pertaining to your vehicle be obtained for specific torque values, wiring diagrams and other related equipment. These manuals are normally available at automotive dealerships and parts stores.

# ADVANCE ADAPTERS INC.

P.O. Box 247, 4320 Aerotech Center Way

Paso Robles, CA 93447

Telephone: (800) 350-2223

Fax: (805) 238-4201

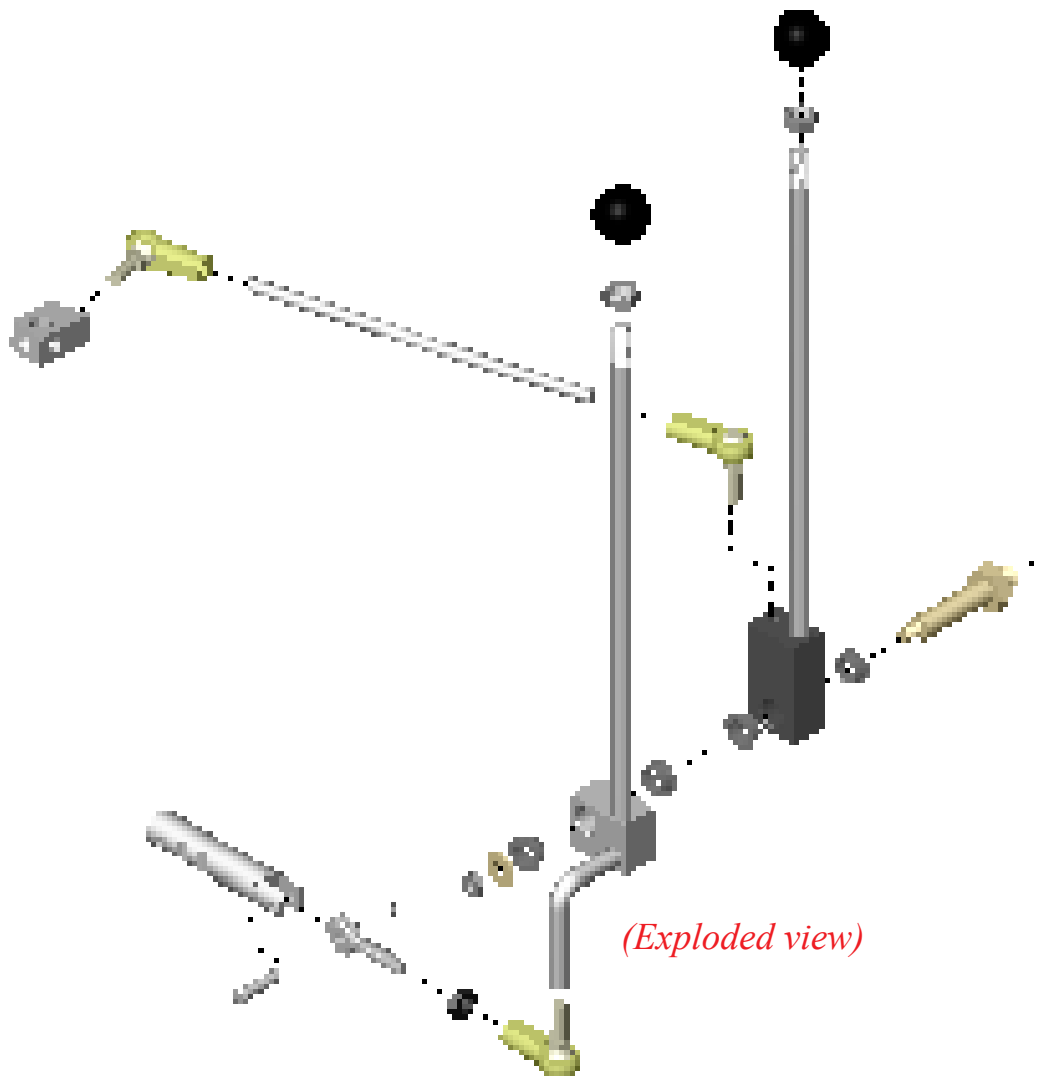
P/N: 715572

New Item: (8/02)

PAGE 4 OF 4

Page Rev. Date: 09-16-02

## TOYOTA L/C TRANSFER CASE TWIN STICK



**SPECIAL NOTE:** The components packaged in this kit have been assembled and machined for specific type of conversions. Modifications to any of the components will void any possible warranty or return privileges. If you do not fully understand modifications or changes that will be required to complete your conversion, we strongly recommend that you contact our sales department for more information. This instruction sheet is only to be used for the assembly of Advance Adapter components. We recommend that a service manual pertaining to your vehicle be obtained for specific torque values, wiring diagrams and other related equipment. These manuals are normally available at automotive dealerships and parts stores.